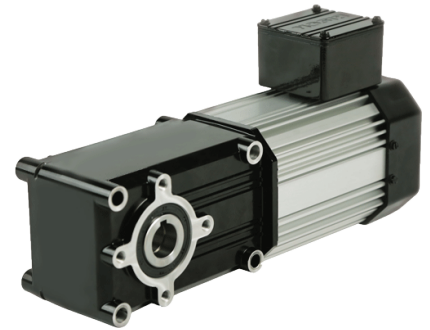


## Maximum Efficiency Right-angle Gearmotors 725 115/230V Single Phase Dual Voltage/Dual Frequency

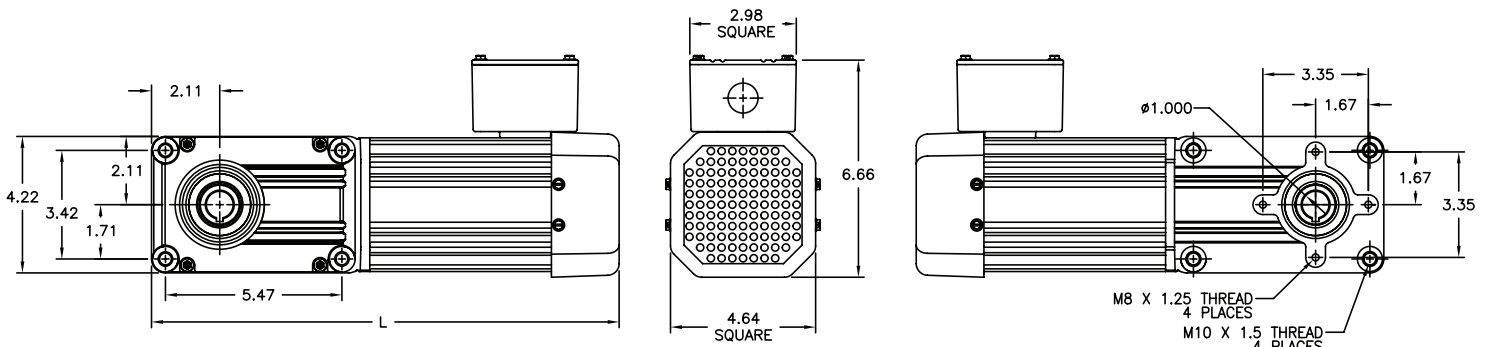
PowerSTAR® 725 Series 115/230V dual voltage/dual frequency single phase right-angle gearmotor offers up to 900 in-lbs of torque running continuously for reliable and energy efficient operation.



### 725 Series 115/230V 1PH Dual Voltage/Dual Frequency - TEFC\*

Part Number	Speed (RPM)		Rated Torque (in-lbs)		Input HP	Gear Ratio	OHL (lbs)	Rated Current 115V (Amps)		Rated Current 230V (Amps)	
	50Hz	60Hz	50Hz	60Hz				50Hz	60Hz	50Hz	60Hz
026-725E0010	140	168	60	60	1/5	10	355	3.1	2.4	1.65	1.25
026-725E0015	93	112	90	90	1/5	15	400	3.1	2.4	1.65	1.25
026-725E0020	70	84	120	120	1/5	20	430	3.1	2.4	1.65	1.25
026-725E0030	47	56	180	180	1/5	30	470	3.1	2.4	1.65	1.25
026-725E0040	35	42	240	240	1/5	40	510	3.1	2.4	1.65	1.25
026-725E0050	28	34	300	300	1/5	50	550	3.1	2.4	1.65	1.25
026-725E0060	23	28	360	360	1/5	60	580	3.1	2.4	1.65	1.25
026-725E0080	18	21	480	480	1/5	80	620	3.1	2.4	1.65	1.25
026-725E0100	14	17	380	380	1/8	100	740	1.5	1.9	0.84	1.0
026-725E0120	12	14	450	450	1/8	120	780	1.5	1.9	0.84	1.0
026-725E0150	9.2	11	570	570	1/8	150	820	1.5	1.9	0.84	1.0
026-725E0180	7.8	9.3	680	680	1/8	180	870	1.5	1.9	0.84	1.0
026-725E0240	5.8	7.0	900	900	1/8	240	940	1.5	1.9	0.84	1.0

\*Capacitors required - offered separately. See accessories on page 17



L
L = Gearmotor length:
1/8 HP: 13.62
1/5 HP: 15.37

